

# LIVING IN ANSBACH

## BIKING





**WELCOME IN ANSBACH!**

**SERVUS IN ANSBACH!**

Dear international students,

going by bike is not only a perfect way to get around Germany, but also a German tradition. There are about 40 000 km of bike paths waiting for you to explore.

Don't be scared if the number of bicycles or the amount of rules are overwhelming at first. There are many opportunities for you to learn how to ride a bike or improve your skills.

As always, if you have any questions about living and studying in Ansbach, you can always contact the Welcome Center.

Greetings,

Your Welcome Center

[WELCOME@HS-ANSBACH.DE](mailto:WELCOME@HS-ANSBACH.DE)

<b>1.</b>	<b>HOW TO FIND THE PERFECT BIKE .....</b>	<b>4</b>
<b>2.</b>	<b>WHERE TO BUY THE PERFECT BIKE .....</b>	<b>5</b>
<b>3.</b>	<b>HOW TO PROTECT YOUR BIKE.....</b>	<b>6</b>
<b>4.</b>	<b>WHERE TO LEARN HOW TO RIDE .....</b>	<b>8</b>
<b>5.</b>	<b>RULES FOR DRIVING A BIKE.....</b>	<b>9</b>
<b>6.</b>	<b>TIPS FOR CYCLING IN GERMANY .....</b>	<b>13</b>
<b>7.</b>	<b>ELECTRIC BIKES /PEDELECS.....</b>	<b>14</b>

# 1. HOW TO FIND THE PERFECT BIKE

There are many bikes for sale – however your bike needs to be road safe according to German laws.

Pay attention to the following features when buying a bicycle:

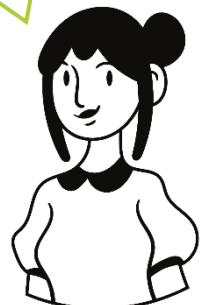
- A white front light
- A red backlight
- A white reflector in the front
- A red reflector in the back
- Functioning front and back-wheel brakes
- A bell
- Reflector stripes around the tire OR two orange reflectors on the spokes of the wheel
- Two yellow reflectors on each pedal

**YOU CAN ALSO GET REMOVABLE LIGHTS! YOU DO NOT HAVE TO ATTACH THEM TO YOUR BIKE DURING DAYLIGHT HOURS**

**BUT YOU MUST CARRY THEM WITH YOU!**

**IF YOUR BIKE IS NOT ROADSAFE; YOU WILL GET FINED AND YOU MIGHT LOSE YOUR BIKE!**

A helmet is not mandatory! But I would really advise you to wear one!



## 2. WHERE TO BUY THE PERFECT BIKE

Bicycles can be quite expensive, especially if you are looking for e-bikes. It is therefore always a good idea to buy second-hand bikes.

The most important addresses in the region are compiled below for you!

- [Kleinanzeigen – früher eBay Kleinanzeigen. Anzeigen gratis inserieren mit Kleinanzeigen](#): local classified ads where you can buy a wide variety of bikes from private individuals
- NOA Noris Arbeit gGmbH (Gutenstetterstraße 20, 90449 Nürnberg): a big second-hand shop full of furniture and some bikes
- [Fahrradhändler](#): a list of bicycle shops that mainly sell second-hand bikes
- [Recycle - der Mobifloh – Nürnberg zirkulär](#): regular flea markets for bicycles in Nuremberg

Please be aware: those websites are only available in German

Whenever you buy a bike - even if it's second hand - **always ask for a detailed receipt with the name, colour and details of the bike!**

You need it to register the bike!

(example: [ADFC\\_Musterkaufvertrag\\_2018-08.pdf](#))

**BE AWARE: BIKE THEFT IS VERY COMMON IN GERMANY!**

**THE CLEARANCE RATE IS BELOW 10 %!**



### 3. HOW TO PROTECT YOUR BIKE

There are many things you can do to prevent your bike from being stolen. Please follow all tips, no matter how expensive your bike is.

#### 1. REGISTER YOUR BIKE

Always register your bike at the bike club or the local police. A personalized number will be printed on a sticker or engraved in your bike. If your bike is stolen and found by the police, you can get it back quite easily. Bikes that are not registered can not be connected to their rightful owner.

The registration at the police with a sticker is free of charge. Please be aware: not every police station is able to register your bike; therefore, always call the non-emergency number beforehand.

The engraving process at the bike club costs 20 €. You need to book an appointment beforehand ([ADFC Nürnberg - Codierung](#)).

You need to bring:

- your valid ID card
- Proof of Purchase
- your bike
- a picture of your bike (for the police registration)

#### 2. USE A GOOD LOCK

Try to buy good, sturdy locks that are big enough to lock your bike to a bike stand or lamp post. Pay attention to materials and choose a solid locking system. You should expect to pay around 10% of your bike's price for a good lock.

If you own an expensive electronic bike, GPS tracking in your lock might be a good investment. It can alert you whenever your bike is being moved. Be aware: Even if you can track your bike, you should never try to go after it by yourself. Always contact the police and wait for them. Stealing your own bike back is considered theft!

#### 3. PARK SAFELY

Always lock your bike with its frame to a firmly anchored object, like a lamp post or bike rack – even if you are only gone for a second. Do not simply lock your wheels, as thieves might be able to carry it nonetheless.

Don't forget to secure your bike at home as well: always lock it if needed and keep access doors closed.

If you own an electric bike, you can also take the battery with you, since the bike practically becomes useless, which might deter most thieves.

### MY BIKE HAS BEEN STOLEN. NOW WHAT?

It is a good idea to fill out a **bike pass** with all details! (e.g. [Fahrradpass 2017.pdf](#))



- call the non-emergency line of your local police immediately
- Call your insurance immediately (if your bike is insured)
- Look for your proof of purchase, registration details, bike details and pictures
- Give all details to the police

## 4. WHERE TO LEARN HOW TO RIDE

Do not worry if you do not know how to ride your bike yet. There are many courses for grown-ups and it's not a reason to be ashamed.

### COURSES WHERE YOU CAN LEARN HOW TO RIDE A BIKE:

In Nuremberg: [ADFC Nürnberg - Radfahrschule für Erwachsene - ADFC Radfahrschule](#)

For women: [ISKA: FZF: Fahrradkurs für Frauen](#)

For women that aren't born in Germany:

[integrationdurchbildung.nuernberg.de/angebotsdatenbank/detail/show/321?type=99](https://integrationdurchbildung.nuernberg.de/angebotsdatenbank/detail/show/321?type=99)

**Course languages:**  
Arabic, German,  
Turkish, Kurdish

### COURSES WHERE YOU CAN IMPROVE YOUR BIKE SKILLS:

In Ansbach: [FahrSicherheitsTraining in Wassertrüdingen | ADFC Veranstaltungsportal](#)

### DO YOU WANT MORE CYCLING?

#### Bike clubs in and around Ansbach:

- Racing bikes: [Wer sind Wir](#)
- Normal bikes: [Radtouren](#)
- Bikes and running: [WLB Sports Ansbach](#)
- Normal bikes: [CYCLING FRIENDS NÜRNBERG \(@cyclingfriendsnuernberg\)](#) • [Instagram-Fotos und -Videos](#)

## 5. RULES FOR DRIVING A BIKE

### 1. HAVE A ROAD SAFE BIKE

If your bike does not have all the necessary safety features, you will get fined and/or lose your bike.

### 2. DON'T DRINK AND DRIVE

Your bike is **not** a good alternative if you are drinking alcohol. Since you are an active member of the road traffic, you still need to follow all the rules.

**Up to 0,3 per mille:** biking is only legal IF you ride without any suspicious behaviour and if there are no accidents

**Up to 1,6 per mille:** biking is a criminal offense with strict consequences even if there are no accidents or suspicious behaviour. You will get a fine, 2 Flensburg points and are forced to go a medical-psychological evaluation (cost: up to 2500 Euro) which you need to pass if you don't want to lose your driver's license.

Flensburg Points:  
penalty points for  
driving offences  
in Germany

### 3. ONLY USE THE CORRECT LANES

In Germany you are only allowed to ride your bike on certain lanes.

#### Bike lanes:

You **must** use bike lanes.



[Verkehrsschild Fahrradweg Fahrrad - Kostenloses Foto auf Pixabay](#)

#### Sidewalks:

You are **not allowed** to use the sidewalks if you are older than 8 years.

If you are under 8 years: you must use the sidewalk if there is no bike path.

If you are between 8 and 10: you can choose if you want to use the bike lane or sidewalk.

## Pedestrian Area:

You are not allowed to cycle in a pedestrian area; you need to push your bike.



[File:Zeichen - Fußgänger Zone. Used at Schwäbisch Hall, STVO 1970.svg - Wikimedia Commons](#)

The only exception are pedestrian areas with this sign:



[File:Fahrrad frei P2010085.JPG - Wikimedia Commons](#)

## Autobahn / Countryside Highways:

The Autobahn and the Countryside Highways are only for vehicles that can go over 60 km/h, everything else is not allowed.

It is life-threatening to go there by bike, and you will get fined!



[File:Autobahnschild \(A75\) im Zentralmassiv, grobe Fahrtrichtung Auvergne - Cevennen.jpg - Wikimedia Commons](#)

**ON ALL ROADS: YOU ARE NOT ALLOWED TO CYCLE AGAINST THE FLOW OF TRAFFIC!**

**CHANGE LANES IF YOU MUST!**

**THERE ARE FINES IF YOU DON'T!**

**THERE ARE ONLY TWO EXCEPTIONS: IF THERE IS ONLY ONE CYCLE PATH FOR BOTH DIRECTIONS AND ON ONE-WAY STREETS!**

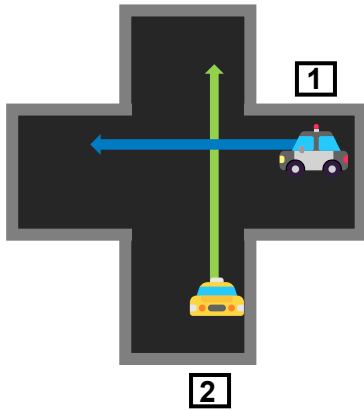


[File:Zeichen 220 - Einbahnstraße, rechtsweisend, STVO 1970.svg - Wikimedia Commons](#)

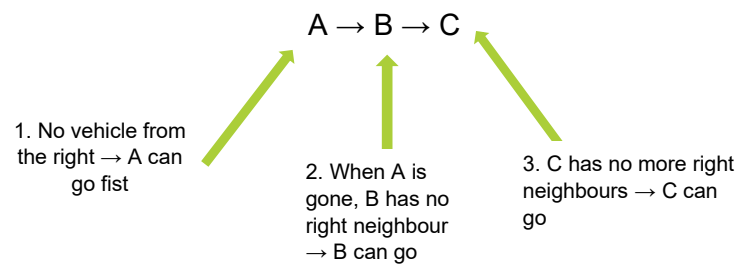
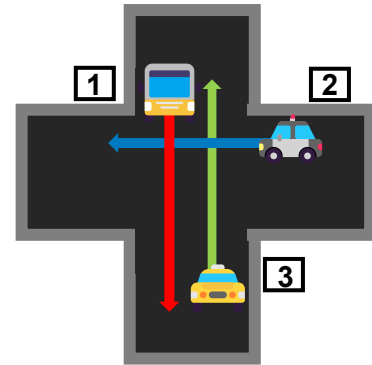
#### 4. RIGHT BEFORE LEFT

The right before left rule has to be followed on all intersections and junctions if there are no traffic signals. No matter if you are in a car, on a bike or walking.

It means: If a traffic participant comes from the right, it has the right-of-way over a vehicle on its left.



This rule also applies to more than two vehicles:



#### 5. TRAFFIC LIGHTS

If there are intersections with traffic lights, you do not need to pay attention to the right-of-way. You do however, need to follow the lights properly.



**Red** means stop

**Yellow** means stop – BUT: you can go if you would cause an accident otherwise

**Green** means go – BUT: you must stop if you are turning to the left side





During the evenings and when traffic lights fail, there might be **orange blinking lights**. Approach with caution and follow the right-before-left rules

## 6. HOW TO TURN

1. Always pay attention when you turn, especially to the left.
2. Shoulder check: Look over your shoulder and check the traffic
3. Give a hand signal: use your arm to indicate the direction where you want to turn
4. Choose your lane: If there is a bicycle lane, use it!

Don't be afraid to take up space! You are a legitimate part of the traffic on your bike! Claim your lane if needed!

5. Make the turn:  when turning right – watch out for pedestrians! They always have priority!  
 When turning left – watch out for oncoming vehicles! They always have priority!

If you ever feel unsafe, drive to the next sidewalk!

Dismount, breathe and walk to the other side of the crosswalk!

## 6. TIPS FOR CYCLING IN GERMANY

### 1. BLIND SPOTS

- Always pay attention to trucks and cars right next to you! They may not be able to see you when they make a turn!
- Drive defensively and be ready to brake all the time!
- Keep your distance!
- Make eye contact with the driver!

### 2. DOORING

Be cautious when you pass cars that are parked or about to be parked since the drivers may open the door without looking (8% of all accidents in Berlin are due to dooring).

Keep your distance and stay vigilant!

### 3. ACCIDENTS

If you ever get in an accident, do the following things:

- Never leave! No matter if you caused the accident, are a part of it or an eyewitness – never leave without calling the police!

#### **LEAVING WITHOUT CALLING THE POLICE IS A PUNISHABLE OFFENCE!**

- Call 112, state your full name and address and answer the following questions:
  - Where did it happen?
  - What exactly happened?
  - How many people are involved?
  - Which types of injuries are there?
- Be safe! Pay attention to the traffic!

## 7. ELECTRIC BIKES /PEDELECS

Electric bikes are getting increasingly popular in Germany. However, there are special rules and regulations when it comes to them.

	<b>ELECTRIC BIKE</b>	<b>ELECTRIC BIKES WITHOUT PEDAL ASSISTANCE</b>	<b>PEDELEC</b>
	Pedal assistance up to 25 km/h	No pedal assistance up to 25 km/h	Pedal assistance up to 45 km/h
<b>LICENCE NEEDED</b>	No driver`s licence needed	Driver`s licence needed	Driver`s licence needed
<b>MINIMUM AGE</b>	No minimum age	15 + years	15 + years
<b>INSURANCE NEEDED</b>	No insurance licence plate needed	Insurance licence plate needed	Insurance licence plate needed
<b>HELMET USE</b>	No compulsory helmet use	Compulsory helmet use	
<b>BIKE LANES</b>	Use of bike lanes allowed	Use of bike lanes outside of cities always allowed; in cities only with a special sign:	Only allowed on roads – not on bike lanes



ALL INFORMATION IS CURRENT AS OF MAY 2026.

ALL INFORMATION IS SUBJECT TO CHANGE WITHOUT PRIOR NOTICE.